

**TATA STEEL**



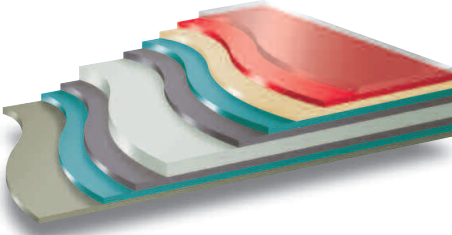
**Colorcoat Prisma<sup>®</sup>**  
Aesthetics that last.  
Guaranteed.

# Performance

## Galvalloy®

Colorcoat Prisma® uses the unique and proven Galvalloy® metallic coating by Tata Steel. Galvalloy® is made with a special mix of 95% Zinc (Zn) and 5% Aluminium (Al) that conforms to EN 10346:2015. The carefully developed proportions of Zinc and Aluminium in Galvalloy® offers a combination of increased barrier and sacrificial protection when compared with conventional Hot Dip Galv (HDG) coatings and provides unrivalled corrosion protection, even at the cut edges.

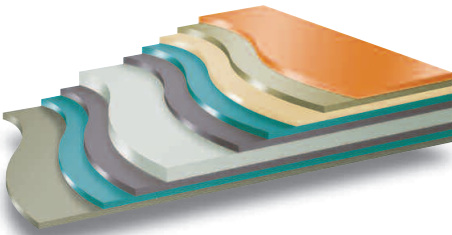
### Colorcoat Prisma® Solid, Metallic & Matts



#### Key

15µm additional protective clear layer	Base steel substrate
25µm coloured layer with polyamide beads	Galvalloy® metallic coating
25µm corrosion resistant primer	Pre-treatment
Pre-treatment	High performance backing coat
Galvalloy® metallic coating	

### Colorcoat Prisma® Elements



#### Key

10µm additional protective clear or coloured layer	Base steel substrate
20µm coloured or base polymer layer	Galvalloy® metallic coating
10µm corrosion resistant primer	Pre-treatment
Pre-treatment	High performance backing coat
Galvalloy® metallic coating	

## Typical properties

Colorcoat Prisma®		Test Standard	
<b>Nominal organic coating thickness</b>			
Solids, Metallics, Matts	(µm)*	65	EN 13523-1
Elements	(µm)*	40	EN 13523-1
<b>Specular gloss (60°):</b>			
Solids, Metallics	(%)	25-35	EN 13523-2
Matts	(%)	<10	EN 13523-2
Elements	(%)	30-40	EN 13523-2
<b>Scratch resistance:</b>			
Solids, Metallics, Matts	(g)	>3000	EN 13523-12
Elements	(g)	>2500	EN 13523-12
<b>Abrasion resistance: (Taber, 250 rev, 2kg, CS10)</b>			
Solids, Metallics, Matts	(mg)	<15	EN 13523-16
Elements	(mg)	<15	EN 13523-16
<b>Flexibility:</b>			
Minimum bend radius	(T)	0.5T@16°C	EN 13523-7
Reverse impact	(J)	≥18	EN 13523-5
Adhesion (cross hatch)	(%)	100	EN 13523-6
Pencil hardness		H	EN 13523-4
<b>Maximum continuous operating temperature</b>			
	(°C)	90	
<b>Corrosion resistance:</b>			
Salt spray	(h)	1000	EN 13523-8
Humidity	(h)	1500	EN 13523-26
<b>Corrosion resistance category</b>			
		RC5 CPI5	EN 10169:2015
<b>UV category</b>			
		Ruv4	EN 10169:2015

\*µm = micron

#### Notes

- The figures contained in this table are typical properties and do not constitute a specification. Tested in accordance with EN 13523. For details on test methods visit [www.colorcoat-online.com](http://www.colorcoat-online.com)
- For health and safety datasheets contact the Colorcoat Connection® helpline on +44 (0) 1244 892434.

## Fire performance

### Reaction to fire

Colorcoat Prisma® is classified as A1 in accordance with EN 13501-1:2007 and A1:2009.

### Resistance to fire

For products covered by EN 14782:2005 Colorcoat Prisma® is deemed to satisfy, without the need for further testing, the requirements for external fire performance of roof covering product in accordance with Commission Decision 2000/553/EC.

# Peace of mind guaranteed

## Confidex® Guarantee

Confidex® is the product performance guarantee for Colorcoat Prisma®, when used in an external conventional building envelope application namely roof and wall cladding using single skin, built-up or composite panel construction in industrial and commercial buildings.

Confidex® offers the longest and most comprehensive guarantee for pre-finished steel available in Europe with Colorcoat Prisma® being guaranteed for up to 40 years.

The Confidex® Guarantee is project specific and upon online registration provides a contractual relationship between Tata Steel and the building owner, meaning that in the case of a claim the contact with Tata Steel is direct rather than having to go through the supply chain, saving time and money. What's more this is transferable should the building owner change by simply filling in the form on the back of the guarantee certificate.

### Who registers?

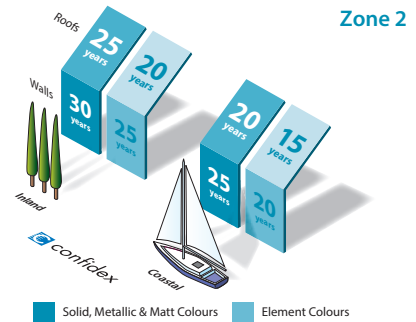
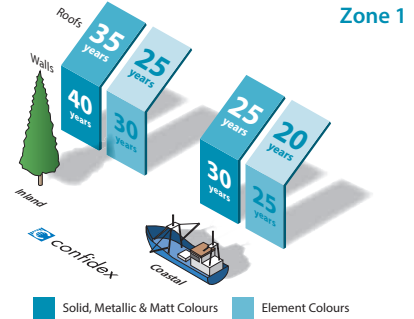
Usually the cladding contractor or the cladding system manufacturer, but anyone in the supply chain can apply online at: [www.colorcoat-online.com/registration](http://www.colorcoat-online.com/registration)

If you want to check if your building has been registered contact the Colorcoat Connection® helpline on +44 (0) 1244 892434.



- Yellow box: Northern Europe – Zone 1
- Orange box: Southern Europe – Zone 2
- Green box: For areas outside of Confidex® zones please contact Tata Steel for more information.

## Confidex® durations



### Notes

1. Figures under the Coastal heading are for buildings within 1 km of any coast.
2. Full terms and conditions of the Confidex® Guarantee are on the online application form, available at [www.colorcoat-online.com/registration](http://www.colorcoat-online.com/registration)
3. Confidex® must be registered within 3 months of the building completion date for the guarantee to be valid.
4. The Confidex® Guarantee periods on the diagram above are applicable to Zone 1 and Zone 2. For more information on other zones visit [www.colorcoat-online.com/confidexmap](http://www.colorcoat-online.com/confidexmap)

## Breakthrough in colour

Due to the superior aesthetic properties of Colorcoat Prisma® a colour guarantee is uniquely included as part of the Confidex® Guarantee for up to 20 years in Zone 1 areas and up to 15 years in Zone 2 (see terms and conditions). This includes all 29 standard colours in the range, subject to location and use. For more information contact the Colorcoat Connection® helpline on +44 (0) 1244 892434.

# Independent certification

## British Board of Agrément Certificate

The long-term performance of Colorcoat Prisma® has been recognised within the BBA certificate 91/2717 and relates to the product use as external roofing and cladding or internal lining. *“Colorcoat Prisma® coating and metal treatment will protect the steel substrate against corrosion for a period in excess of 40 years in normal industrial, urban and rural environments”.*

## Testing according to Russian GOST standards

Colorcoat Prisma® has been tested by MISIS in Russia which concluded that when used in difficult climatic conditions (e.g. coastal areas) of medium aggressive environments, it should have its functional and aesthetic properties unchanged in Southern and Northern Russian regions with temperatures ranging from +60 to -60 degrees C.

## U-mark certification

Colorcoat Prisma® is being tested by the Karlsruher Institut für Technologie according to DIN 55928-8 and DIN 55634.

## ASTM

Colorcoat Prisma® has also been tested according to a variety of key ASTM test standards for corrosion and UV resistance. For markets that require ASTM test results please contact us.

# Sustainability

## Environmental Product Declarations

To demonstrate the environmental impacts, Tata Steel have published an Environmental Product Declaration (EPD) for each of the Colorcoat® assessed cladding systems, based on an initial Life Cycle Analysis. Please visit [www.colorcoat-online.com/epd](http://www.colorcoat-online.com/epd) for further details.

## System environmental assessment

In the UK roof and wall systems using pre-finished steel achieve a Green Guide A+ rating. Manufacture and processing of Colorcoat Prisma® into building envelope products, through our approved supply chain, can meet the responsible sourcing criteria for BREEAM. Our manufacturing site has an environmental management system which has been certified to ISO 14001.

## BES 6001 Responsible Sourcing

At Tata Steel we are committed to making the products society needs and to making them in the most responsible way. Our commitment to sustainability also means we actively manage our impacts and contribution throughout the full life of our products - with our suppliers, within our own operations, through the supply chains we serve and by taking responsibility for recycling steel. Colorcoat Prisma® is certified to the Building Research Establishment’s standard for responsible sourcing of materials BES 6001. This reinforces our commitment to sustainability.

## BREEAM and LEED

EN15804 compliant Environmental Product Declarations for Supply Chain Partner cladding systems using Colorcoat Prisma® and independent third party performance accreditation fully supports your building certification schemes such as LEED and BREEAM.



# Colorcoat® services

The Colorcoat® brand is recognised as the exclusive mark of quality and metal envelope expertise and is supported by a comprehensive range of services, technical advice and guidance.

## Colorcoat® technical support team

If you are building to specific sustainability credentials or performance criteria, our dedicated team can offer you truly objective advice on a range of metal building envelope systems to ensure you get the right solution for your building. Call the Colorcoat Connection® helpline to request a visit from your regional representative.

## Colorcoat Connection® helpline

This dedicated helpline offers immediate and easily accessible advice and guidance on a wide range of building issues. Contact us on +44 (0) 1244 892434.

## Colorcoat® technical papers

We have produced a number of technical papers that can help you address key issues in building design and construction.

## Colorcoat® supply chain partners

Colorcoat® products are available through our market leading supply chain partners, who have CE marked and SCl assessed systems that we recommend for the very highest quality and service.

## Colorcoat® accredited distributors

Our Colorcoat® Accredited Distributors can provide you with any colour from the Colorcoat Prisma® range in small quantities, with a 48 hour service.

## Metal hand samples

Metal hand samples are available for all colours. For a truer representation of colour and effect, please obtain metal hand samples from the Colorcoat Connection® helpline or online at [www.colorcoat-online.com/samples](http://www.colorcoat-online.com/samples)

## Colorcoat® Life Building

Providing an interactive guide to sustainable building envelope design, it intends to ensure that sustainability is factored into projects from the outset. It provides all the support we give around design, all in one easy to use place. Please visit [www.colorcoat-online.com](http://www.colorcoat-online.com) for further details

# Colour support

A range of the most popular colours are available on short production lead times, and all colours are available from our Colorcoat® accredited distributors in standard sizes. To check the quickest colour availability for your project contact us on the Colorcoat Connection® helpline on +44 (0) 1244 892434.

## Colour consistency

If tonal consistency is critical, all cladding for a single elevation should come from the same production batch. All metallic shades and Element colours exhibit a degree of directionality.

## Matching components

If accessories made from other materials are to be colour-matched to the roof or wall cladding, the best reference is the actual profiles or panels delivered to site, or material from the same batch.

## Repertoire®

As an additional service, whether you want your building to stand out, or blend with the surroundings, we can create a unique identity for your building. Through our Repertoire® colour consultancy service we can match almost any solid colour for walls or roofs of your building, with a minimum order quantity of 5,000m<sup>2</sup>, we can work from either physical swatches or reference standards. Any approved Repertoire® solid colour will have the appropriate Confidex® Guarantee duration. The colour guarantee is only available for the standard colours not for approved Repertoire® colours.

## Colorcoat® Compass

Colorcoat® Compass is a digital colour system. It allows designers to scan objects to match specific colours, search the standard and previously matched colours, or search using RAL or British Standard colour codes to make an informed colour choice based on availability, feasibility and level of guarantee.

# Colour availability

## Colour reference table

Colour	BS	RAL	SRI	SSST
Pegasus		*	28	72
Aquarius		*	50	64
Atlantis		*	10	78
Helios		*	19	75
Kronos		*	2	82
Sirius		9006	50	63
Orion		9007	24	73
Zeus		*	19	75
Ephyra		*	38	68
Ariana		*	17	76
Hamlet		9002	73	55
Cream		1015	77	53
Oxide Red†		3009	20	75
Sargasso		5003	5	81
Black	00E53	9005	0	82
White	00E55	9010	95	46
Oyster		7035	61	60
Alaska Grey		7000	21	74
Slate Grey		7012	11	78
Anthracite		7016	5	81
Seren White		*	90	48
Seren Silver		*	49	64
Seren Gold		*	51	63
Seren Copper		*	41	67
Seren Black		*	0	83
White Matt		9010	91	48
Sirus Matt		9006	52	63
Orion Matt		9007	20	75
Zeus Matt		*	20	74

### RAL references

4 digit numbers are RAL Classic references.

British Standard or RAL reference numbers shown in the table, represent the nearest colours and are not exact matches to Colorcoat Prisma®.

\* These colours do not have equivalent BS/RAL references.

† Price extra applies.

SRI – Solar Reflective Index as per ASTM E 1980.

SSST – Steady State Surface Temperature as per ASTM E 1980.

## Solar Reflective Index (SRI) and Steady State Surface Temperature (SSST)

The Solar Reflectance Index and Steady State Surface Temperature has been determined for all 29 standard colours according to ASTM E 1980 using the medium wind speed coefficient and values for reflectance and emissivity. Solar reflectivity or reflectance is the ability of a material to reflect solar energy from its surface back into the atmosphere, where the higher the SRI value the greater the ability of the Colorcoat Prisma® colour to reflect the solar radiation.

Depending on the pigment selection, the colours have a different SSST value with white colours having the lowest value, black the highest value and the other colours somewhere in between these extremities.

## REACH

Colorcoat Prisma® is produced with both the surface treatment and primer free of chromates including hexavalent chromate (substances included in the Annex XIV list of REACH) and is fully compliant with the current REACH legislation. To assist customers, updates of REACH obligations as well as product health and safety datasheets are available.



Image courtesy of Atlas Weathering Services Group – South Florida laboratory.

For further details visit:

[www.colorcoat-online.com](http://www.colorcoat-online.com) or ring the Colorcoat Connection® helpline on +44 (0) 1244 892434

# Colorcoat Prisma®

## Introduction

Colorcoat Prisma® demonstrates a step change by utilising cutting edge three layer manufacturing technology to create an optimised, robust, chrome free pre-finished steel product.

This development in manufacturing and extensive testing, allows us to offer Colorcoat Prisma® in a greatly enhanced range of colours and effects, Confidex® guaranteed for up to 40 years, and colour stability for up to 20 years for standard colours.

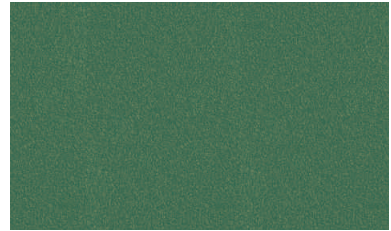
The contemporary colour range includes the Elements selection of natural metal colours as well as a wide selection of inspired Matt shades such as Matt Metallics ideal for facade applications.

Colorcoat Prisma® not only uniquely pushes the boundaries for UV performance but also outperforms the highest European corrosion resistance standards. This makes it the ideal choice for commercial, retail, warehouse, public sector and superior aesthetic buildings that are truly built to last.

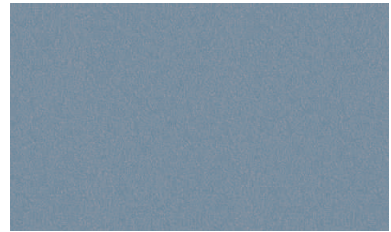
## Product benefits

- Revolutionary 3 layer coating technology, providing enhanced aesthetics and long term performance and durability.
- Confidex® Guarantee for up to 40 years for the weatherside of industrial and commercial buildings with no inspection or maintenance to maintain its validity.
- Colour guarantee included as part of the Confidex® Guarantee for standard colours.
- Optimised Galvalloy® metallic coating for ultimate corrosion resistance and cut edge protection.
- Independently tested for liberation of volatile organic compounds (VOC) against EN ISO 16000-9 and achieved an A+ rating.
- Fully REACH compliant & free of chromates including hexavalent chrome.
- Made in the UK. Certified to BES 6001 Responsible Sourcing Standard.
- Fully supports BREEAM & LEED certification.
- Robust and durable topcoat for easier handling and processing.
- Reverse side branding making traceability easy.

## Special metallics



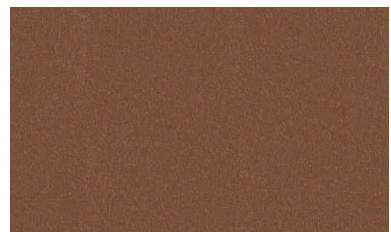
Pegasus



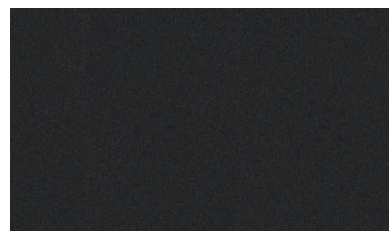
Aquarius



Atlantis



Helios

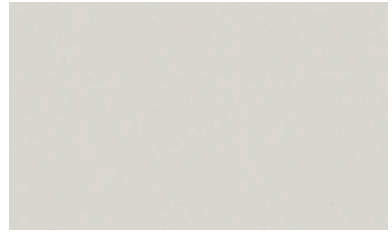


Kronos

## Solid colours



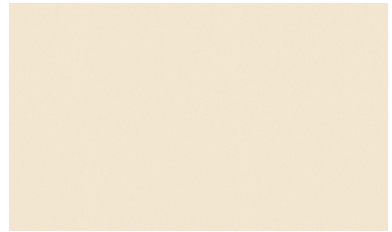
Sirius (RAL 9006)



Hamlet (RAL 9002)



Orion (RAL 9007)



Cream (RAL 1015)



Zeus



Oxide Red† (RAL 3009)



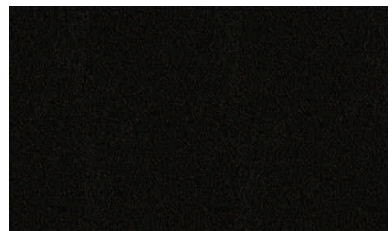
Ephyra



Sargasso (RAL 5003)



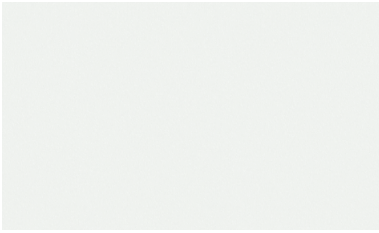
Ariana



Black (RAL 9005)



## Elements



White (RAL 9010)



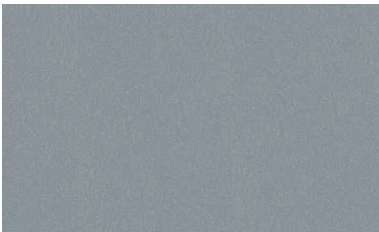
Seren White



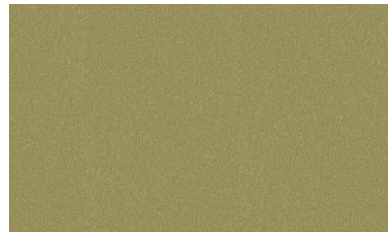
Oyster (RAL 7035)



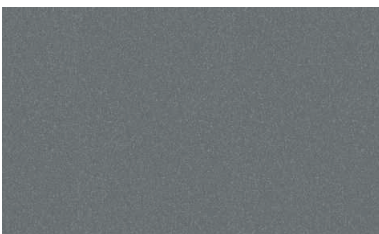
Seren Silver



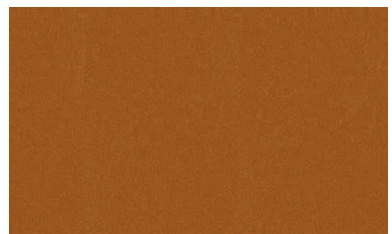
Alaska Grey (RAL 7000)



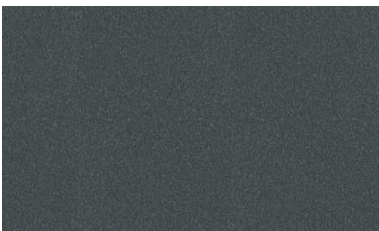
Seren Gold



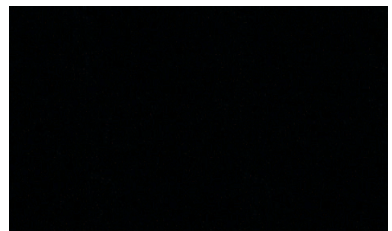
Slate Grey (RAL 7012)



Seren Copper

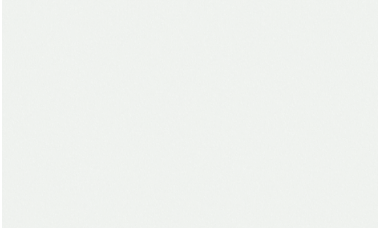


Anthracite (RAL 7016)

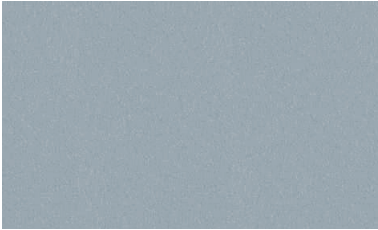


Seren Black

## Matt colours



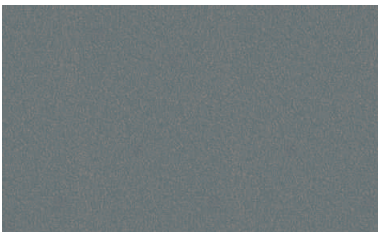
White Matt (RAL 9010)



Sirius Matt (RAL 9006)



Orion Matt (RAL 9007)



Zeus Matt

# Product options

## Specification

To secure the peace of mind that comes from a rigorously manufactured and world wide tested product from Tata Steel, please ensure Colorcoat® as well as the individual product name is specified: Colorcoat Prisma® by Tata Steel with Galvalloy® metallic coating.

## Other colours

Due to the exceptional colour performance of Colorcoat Prisma®, other colours are available that are not shown on the colour card - these include heavily pigmented colours such as reds and oranges subject to minimum order quantities and additional costs.

## Double sided option

Colorcoat Prisma® is provided with a high performance backing coat as standard, but is also available in double sided in a limited range of colours for the reverse side.

For more information please contact the Colorcoat Connection® helpline on +44 (0) 1244 892434.



For further details visit:  
[www.colorcoat-online.com](http://www.colorcoat-online.com) or ring  
the Colorcoat Connection® helpline  
on +44 (0) 1244 892434

[www.colorcoat-online.com](http://www.colorcoat-online.com)

**Trademarks of Tata Steel**

Aquarius, Atlantis, Colorcoat, Colorcoat Connection, Colorcoat Prisma, Compass, Confidex, Galvalloy, Hamlet, Helios, Kronos, Orion, Pegasus, Repertoire, Seren, Sirius and Zeus are trademarks of Tata Steel.

While care has been taken to ensure that the information contained in this publication is accurate, neither Tata Steel, nor its subsidiaries, accept responsibility or liability for errors or for information which is found to be misleading.

Before using products or services supplied or manufactured by Tata Steel Europe Limited and its subsidiaries, customers should satisfy themselves as to their suitability.

**Sales Contact Details**

**Tata Steel**

Shotton Works, Deeside

Flintshire CH5 2NH

United Kingdom

T: +44 (0) 1244 812345

**Colorcoat Connection® helpline**

T: +44 (0) 1244 892434

E: [colorcoat.connection@tatasteel.com](mailto:colorcoat.connection@tatasteel.com)

Tata Steel UK Limited is registered in England under number 2280000 with registered office at 30 Millbank, London, SW1P 4WY.

Copyright 2017 Tata Steel UK Limited  
Language English UK 1017