

TATA STEEL



Colorcoat HPS200 Ultra[®]

Super durable, guaranteed performance

Unrivalled product performance

Exceptional performance

Designed to withstand even the most demanding and aggressive environments, Colorcoat HPS200 Ultra® pre-finished steel provides super durability and corrosion resistance. Whatever your type of building, from warehouses to retail outlets to processing plants, Colorcoat HPS200 Ultra® demonstrates proven performance and reliability.

Typical properties

Colorcoat HPS200 Ultra®		Test standard	
Nominal organic coating thickness	(µm)*	200	EN 13523-1
Specular gloss (60°):			
Non-matt colours	%	20-40	EN 13523-2
Matt colours	%	<10	EN 13523-2
Scratch resistance	(g)	>5000	EN 13523-12
Abrasion resistance (Taber, 250 rev, 1 kg)	(mg)	<12	EN 13523-16
Flexibility:			
Minimum bend radius	(T)	0T (16°C) 1T (0°C)	EN 13523-7 EN 13523-7
Reverse impact	(J)	≥18	EN 13523-5
Adhesion (cross hatch)	(%)	100	EN 13523-6
Maximum continuous operating temperature	(°C)	60	
Corrosion resistance:			
Salt spray	(h)	1000	EN 13523-8
Humidity	(h)	5000	EN 13523-25
Corrosion resistance category		RC5+	EN 10169:2022
UV resistance category		Ruv4	EN 10169:2022
Internal environment classification		CPI5	EN 10169:2022

*µm = micron

Notes

- The figures contained in this table are typical properties and do not constitute a specification. Tested in accordance with EN 13523. For details on test methods visit www.colorcoat-online.com
- For health and safety datasheets contact the Colorcoat Connection® helpline on +44 (0)1244 892434.

Super durability

Colorcoat HPS200 Ultra® has been developed to perform in demanding environments – both external and internal. It has been subjected to comprehensive natural and accelerated testing, often way beyond the required standards. Colorcoat HPS200 Ultra® is used in a wide range of industrial and commercial buildings

and real-life scenarios provide further evidence of the product's super durable qualities.

Excellent test results mean that Colorcoat HPS200 Ultra® is classified as a CPI5 product as per EN 10169:2022. This is the highest classified level of corrosion protection for internal environments and means that Colorcoat HPS200 Ultra® is suitable for the most demanding internal applications such as swimming pools, sewage treatment plants, power stations, energy from waste and processing factories.

Today's super durable Colorcoat HPS200 Ultra® comes with comprehensive guarantees and offers a sustainable solution for the building envelope where longevity and durability are imperative.

Double sided option

To support the super durable qualities of Colorcoat HPS200 Ultra® it is provided with a high performance backing coat as standard however is also available double sided. This provides a robust barrier on the reverse side of the steel substrate for buildings with demanding internal and external environments such as manufacturing plants.

Unrivalled corrosion protection

Colorcoat HPS200 Ultra® uses the unique and proven Galvalloy® metallic coating by Tata Steel. Galvalloy® is made with a special mix of 95% Zinc (Zn) and 5% Aluminium (Al) that conforms to EN 10346:2015. The carefully developed proportions of Zinc and Aluminium in Galvalloy® offers a combination of increased barrier and sacrificial protection when compared with conventional Hot Dip Galv (HDG) coatings and provides unrivalled corrosion protection, even at the cut edges.



Colorcoat HPS200 Ultra® with Galvalloy® roof after 7 years.



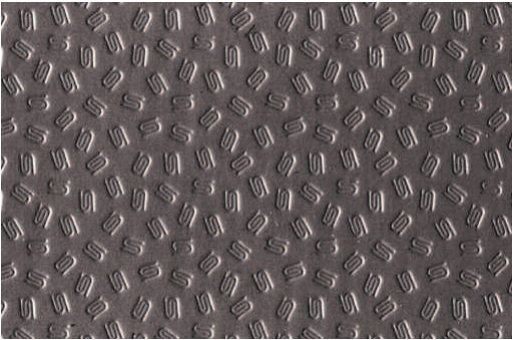
Leathergrain alternative on hot dip galvanised steel substrate roof after 7 years.

Enduring quality

Scintilla®

Unique to Colorcoat HPS200 Ultra® the Scintilla® emboss has been developed with a depth of only nominal 50 microns, which makes it less likely to trap dirt than deeper leathergrain embosses therefore making the pre-finished steel easier to clean whilst being more robust.

Unlike leathergrain patterns the emboss is subtle and does not detract from the overall appearance of the building, looking smooth and creating a modern building appearance from a distance. The Scintilla® emboss provides a unique guarantee of authenticity and an overall thicker protective top coat from Tata Steel.



Fire performance

External fire performance for roof covering products

Colorcoat HPS200 Ultra® when used as a roof covering can be classed as $B_{ROOF}(t1)$, $B_{ROOF}(t2)$, and $B_{ROOF}(t3)$ without further testing, in accordance with Commission Decision 2005/403/EC for all gauges $\geq 0.4\text{mm}$ and for all colours in the product range for single sided and 200/100 product.

Colorcoat HPS200 Ultra® has been tested to EN 1187 test method 4 and can be classified according to EN 13501-5 as $B_{ROOF}(t4)$ for all gauges $\geq 0.4\text{mm}$ and for all colours in the product range for all single and double sided products.

Reaction to fire performance

Colorcoat HPS200 Ultra® has been tested to EN 13823 and EN 11925-2 and can be classified in accordance with EN 13501-1 as C-s2, d0. This classification is valid for all gauges $\geq 0.46\text{mm}$ and for all colours for single sided product.

Made in the UK

Colorcoat HPS200 Ultra® is exclusively from Tata Steel, and is fully traceable with certification to BES 6001 for Responsible Sourcing. From steel manufacture to processing, Colorcoat HPS200 Ultra® uses some of the most advanced, and sustainable, technologies in the UK for high quality building products with a lower carbon footprint.



Specification

To secure the peace of mind that comes from a rigorously manufactured and world wide tested product from Tata Steel, please ensure Colorcoat® as well as the individual product name is specified: Colorcoat HPS200 Ultra® by Tata Steel with Galvalloy® metallic coating.

British Board of Agrément Certificate

The long-term performance of Colorcoat HPS200 Ultra® has been recognised within BBA certificate 91/2717 as "Colorcoat HPS200 Ultra® coating and metal treatment will protect the steel substrate against corrosion for a period in excess of 40 years in normal industrial, urban, suburban and rural environments."



Peace of mind

The Confidex® Guarantee

Confidex® is the product performance guarantee for Colorcoat HPS200 Ultra®, when used in an external conventional building envelope application namely roof and wall cladding using single skin, built-up or composite panel construction in industrial and commercial buildings.

Confidex® offers the most comprehensive guarantee for pre-finished steel available in Europe with Colorcoat HPS200 Ultra® being guaranteed for up to 40 years. Superior and unrivalled improvements in colour stability and gloss retention are translated into a durable product with great longevity.

The Confidex® Guarantee is project specific and upon registration provides a contractual relationship between Tata Steel and the building owner meaning that in the case of a claim the contact with Tata Steel is direct rather than having to go through the supply chain, saving time and money. What's more this is transferable should the building owner change by simply filling in the form on the back of the guarantee certificate.

Who registers?

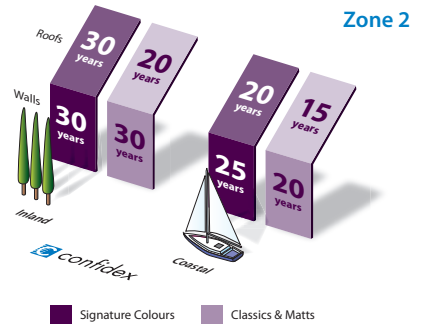
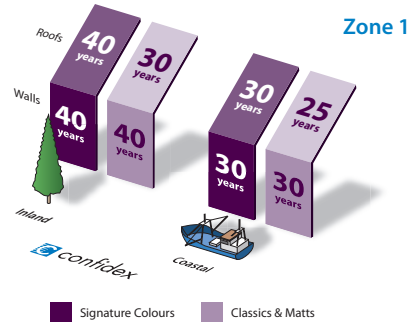
Usually the cladding contractor or the cladding system manufacturer, but anyone in the supply chain can apply online at: www.colorcoat-online.com/registration.

If you want to check if your building has been registered contact the Colorcoat Connection® helpline on +44 (0) 1244 892434.



- Northern Europe – Zone 1
- Southern Europe – Zone 2
- For areas outside of Confidex® zones please contact Tata Steel for more information.

Confidex® zones



Notes

- Figures under the Coastal heading are for buildings within 1km of any coast.
- Full terms and conditions of the Confidex® Guarantee are on the online application form, available at www.colorcoat-online.com/registration
- Confidex® must be registered within 3 months of the building completion date for the guarantee to be valid.
- The Confidex® Guarantee periods on the diagram above are applicable to Zone 1 and Zone 2. For more information visit www.colorcoat-online.com/confidexmap
- Anthraxite Matt is available with a Confidex® Guarantee of up to 40 years in Zone 1 and up to 30 years in Zone 2.

Other warranties

Whilst Confidex® has always been restricted to the weathering performance of the external cladding, we have recognised the growing emergence of demanding internal environment projects, such as energy from waste plants, and may offer a non-Confidex® warranty on a case by case basis for Colorcoat HPS200 Ultra® used internally.

Application specific warranties are also available for non-standard cladding applications; i.e flashings and sectional roller shutter doors.

Please contact the Colorcoat Connection® helpline for guarantees associated with such applications.

Sustainability

Sustainability

At Tata Steel we are committed to making the products society needs and to making them in the most responsible way. Our commitment to sustainability also means we actively manage our impacts and contribution throughout the full life of our products - with our suppliers, within our own operations, through the supply chains we serve and by taking responsibility for recycling steel. Our manufacturing site has an environmental management system which has been certified to ISO 14001, as well as ISO 50001 Energy Management.

Life Cycle Assessment

We constantly strive to ensure that the manufacturing processes and materials used to manufacture Colorcoat HPS200 Ultra® are the most sustainable available. Moreover, the enhanced robustness and durability of Colorcoat HPS200 Ultra® mean that it significantly outperforms other pre-finished steel in terms of environmental impacts over the full life cycle.

To demonstrate the environmental impacts, Tata Steel have published an Environmental Product Declaration (EPD) for each of the Colorcoat® assessed cladding systems, based on an initial Life Cycle Analysis. Please visit www.colorcoat-online.com/sustain for further details.

System environmental assessment

In the UK all roof and wall systems using pre-finished steel achieve a Green Guide A+ rating. Manufacture and processing of Colorcoat HPS200 Ultra® into building envelope products, through our approved supply chain, can meet the responsible sourcing criteria for BREEAM.

Recycling

Colorcoat HPS200 Ultra® is truly recyclable without any loss of quality, time after time. There is a well established and very efficient steel recycling infrastructure which ensures that all steel collected at end of life goes back into steel manufacture. Through this efficient recycling of steel, the environmental investment in steel-making is never wasted, making steel the most sustainable construction material.

Photovoltaic

To demonstrate Tata Steel's commitment to the environment and renewable energy offerings, Colorcoat HPS200 Ultra® now provides the comprehensive Confidex® Guarantee for the pre-finished steel that is under the photovoltaic (PV) frame modules on a roof or wall. This provides the building owner with the confidence that installing a PV array will not have a detrimental effect on the performance of the pre-finished steel, and that the product is guaranteed to perform for the same duration of up to 40 years.

If the building owner is considering retrofitting PV in the future, specifying Colorcoat HPS200 Ultra® ensures that your roof or wall is PV ready, future proofing your building, and providing peace of mind that installation will not have a detrimental and costly impact on the pre-finished steel. The Confidex® Guarantee allows PV modules to be installed at any point throughout the Confidex® Guarantee Period, providing it has been registered, and ensures that the full roof will still be covered for the remainder of the Confidex® Guarantee duration.



Colorcoat® services

The Colorcoat® brand is recognised as the exclusive mark of quality and metal envelope expertise and is supported by a comprehensive range of services, technical advice and guidance.

Colorcoat® business development team

The team are readily available to assist you with queries relating to the design, specification and construction of your metal building envelope. Call the Colorcoat Connection® helpline or visit www.colorcoat-online.com to find out who the representative is for your area.

Colorcoat Connection® helpline

This dedicated helpline offers immediate and easily accessible advice and guidance on a wide range of construction issues. Contact us on +44 (0)1244 892434.

Colorcoat® technical papers

We have produced a number of technical papers that can help you address key issues in building design and construction.

Colorcoat® supply chain partners

Colorcoat® products are available through our market leading supply chain partners, who have products that are UKCA/CE marked and systems that provide the highest quality and service.

Colorcoat® Accredited Distributors

Our Colorcoat® Accredited Distributors can provide you with any colour from the Colorcoat HPS200 Ultra® range in small quantities, with a 48 hour service guaranteed.

Environmental Product Declaration (EPD)

Tata Steel have published an Environmental Product Declaration (EPD) for Colorcoat HPS200 Ultra® that complies with EN 15804 and ISO 14025. Please visit www.colorcoat-online.com/epd for further details.

Colorcoat Connection® helpline +44 (0) 1244 892434

Colour reference table

Colour	BS	RAL	SRI	SSST
Signature colours				
Alaska Grey	*	7000	24	73.3
Albatross	18B17	240 80 05	60	59.7
Anthracite	*	7016	1	81.9
Ardenne	*	7022	5	80.6
Black	00E53	9005	0	82.9
Goosewing Grey	10A05	7038	46	65
Hamlet	*	9002	69	56.5
Honesty	10C31	1015	75	54
Ice Blue	*	230 80 10	71	55.4
Marlstone	10B15	1013	77	53.3
Meadowland	12B17	100 80 20	57	60.7
Merlin Grey	18B25	180 40 05	10	78.8
Mole Brown	*	070 40 10	11	78.2
Moorland Green	12B21	100 60 20	34	69.6
Mushroom	10B19	080 70 10	44	65.7
Olive Green	12B27	100 30 20	5	80.5
Pure Grey	*	000 55 00	19	75.2
Straw	*	080 70 30	48	64.2
Svelte Grey	10B23	080 50 20	22	74
White	00E55	9003	94	47

Classics

Barn Red	*	030 30 40	35	69
Burano	*	3004	34	69.6
Chili	04E56	3000	41	66.9
Heritage Green	*	6002	6	80
Ivy	*	170 20 10	23	73.8
Jade	*	150 50 20	20	75
Juniper Green	12B29	140 20 10	2	81.7
Ocean Blue	18C39	220 30 25	8	79.3
Petra	04D44	3013	47	64.6
Raven	*	7021	0	82.4
Sargasso	*	5003	28	71.9
Solent Blue	18E53	240 40 40	33	69.9
Terracotta	04C39	040 40 40	42	66.4
Van Dyke Brown	08B29	8014	5	80.6
Wedgewood Blue	18C37	220 50 15	24	73.6

Matts

Alaska Grey Matt	*	7000	23	73.7
Anthracite Matt	*	7016	1	81.9
Green Grey Matt	*	150 40 10	7	79.8
Oxidised Matt	*	050 20 10	3	81.2
Terracotta Matt	04C39	040 40 40	46	65.2

RAL references

4 digit numbers are RAL Classic references.

7 digit numbers are RAL Design references.

British Standard or RAL reference numbers shown in the table, represent the nearest colours and are not exact matches to Colorcoat HPS200 Ultra®.

* These colours do not have equivalent BS references.

SRI – Solar Reflective Index as per ASTM E 1980.

SSST – Steady State Surface Temperature as per ASTM E 1980.

Colorcoat HPS200 Ultra®

Colorcoat HPS200 Ultra® pre-finished steel provides exceptional performance and corrosion resistance for building envelope applications. Guaranteed for up to 40 years it is backed up with even more extreme testing and real world global data to demonstrate the best combination of excellent colour stability, gloss retention and outstanding durability.

To make the colour selection process easier the colour palette is grouped as follows: Signature, Classic and Matt colours.

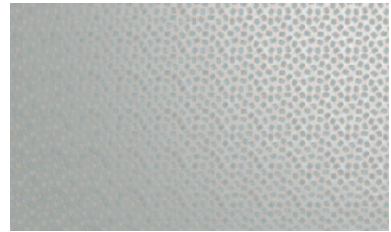
Product features and benefits

- Optimised Galvalloy® metallic coating for exceptional corrosion resistance and cut edge protection.
- Meets Ruv4 and surpasses RC5+ as per EN 10169:2022 proving excellent colour and gloss retention and corrosion resistance.
- Scintilla® embossed as a mark of authenticity from Tata Steel.
- Made in the UK for a lower carbon footprint and certified to BES 6001 Responsible Sourcing standard.
- Confidex® Guarantee for up to 40 years for the weatherside of industrial and commercial buildings with no inspection or maintenance to maintain its validity except when used on a roof or wall that has a Photovoltaic (PV installation).
- Can be used under Photovoltaic (PV) frame modules with no reduction in guarantee length ensuring all parts of the roof or wall are covered for the same duration.
- Exceeds requirements of CPI5 as per EN 10169 demonstrating excellent barrier properties when used internally.
- Independently tested for liberation of volatile organic compounds (VOC) against EN ISO 16000-9 and achieved an A+ rating.
- Fully REACH compliant & free of chromates including hexavalent chrome.
- BBA certified for durability in excess of 40 years.
- Fully recyclable.

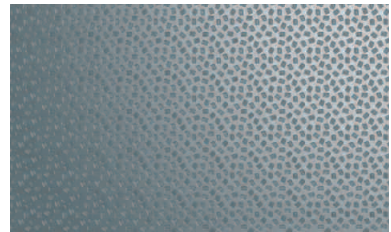
Signature



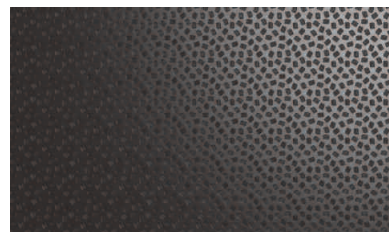
White (RAL 9003)



Goosewing Grey (RAL 7038)



Alaska Grey (RAL 7000)

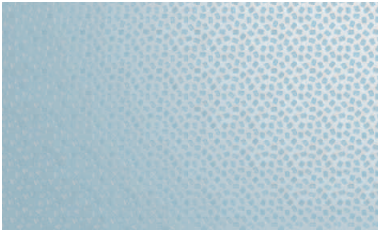


Anthracite (RAL 7016)

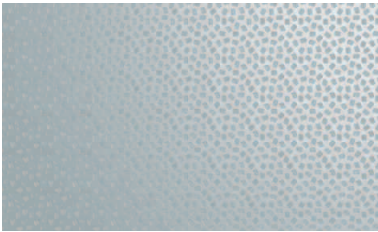


Black (RAL 9005)

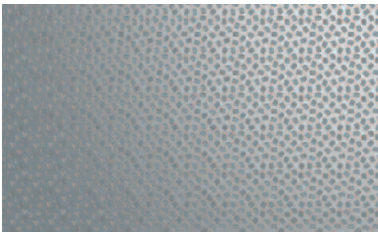
Signature



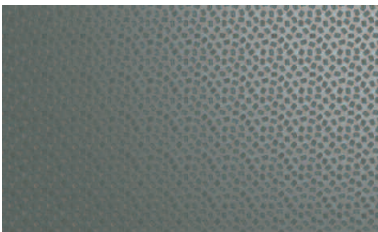
Ice Blue (RAL 230 80 10)



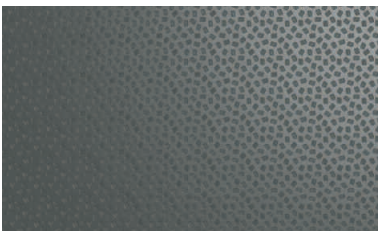
Albatross (RAL 240 80 05)



Pure Grey (RAL 000 55 00)



Merlin Grey (RAL 180 40 05)



Ardenne (RAL 7022)

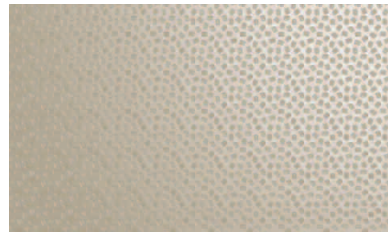
Signature



Marlstone (RAL 1013)



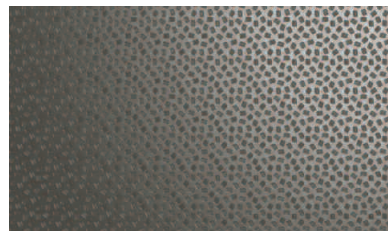
Honesty (RAL 1015)



Mushroom (RAL 080 70 10)



Straw (RAL 080 70 30)

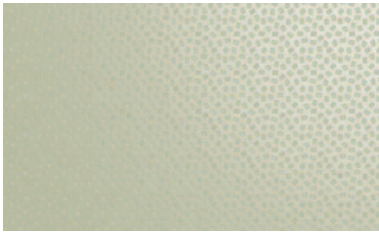


Mole Brown (RAL 070 40 10)

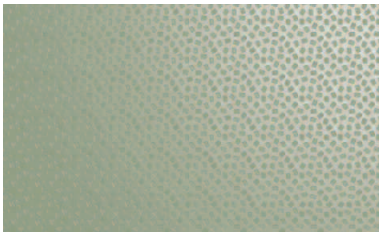
Signature



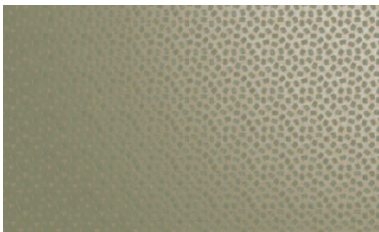
Hamlet (RAL 9002)



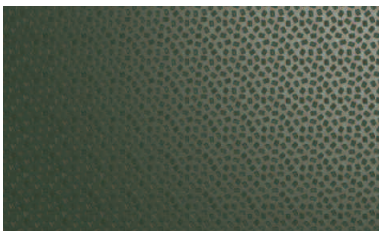
Meadowland (RAL 100 80 20)



Moorland Green (RAL 100 60 20)

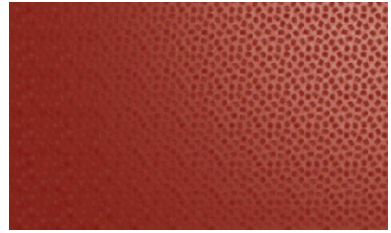


Svelte Grey (RAL 080 50 20)

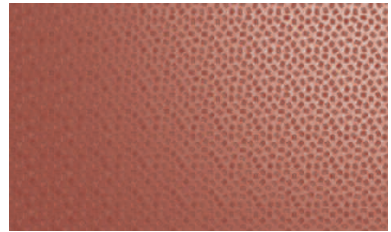


Olive Green (RAL 100 30 20)

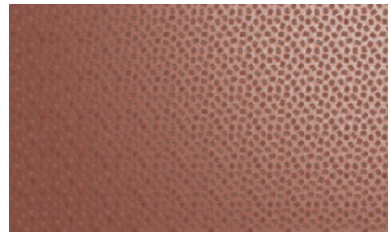
Classics



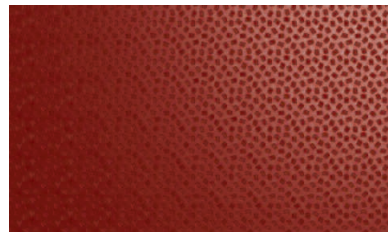
Chili (RAL 3000)



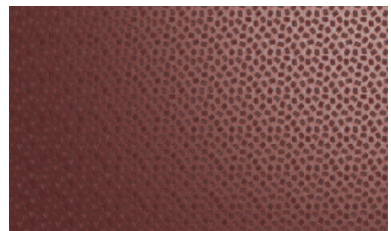
Petra (RAL 3013)



Terracotta (RAL 040 40 40)



Barn Red (RAL 030 30 40)

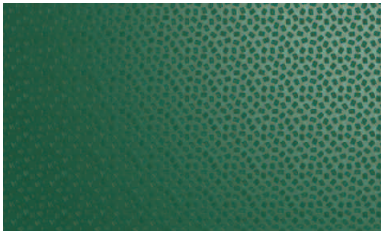


Burano (RAL 3004)

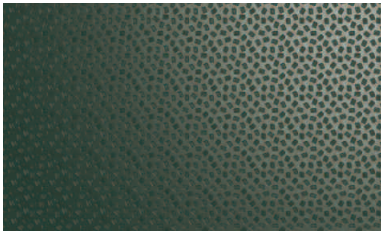
Classics



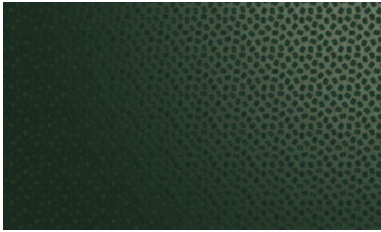
Jade (RAL 150 50 20)



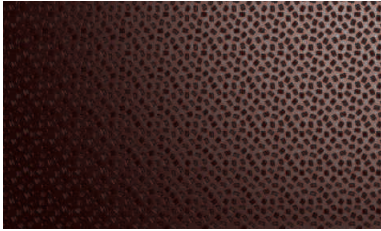
Heritage Green (RAL 6002)



Juniper Green (RAL 140 20 10)

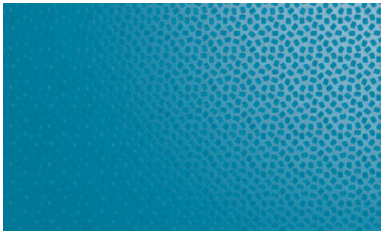


Ivy (RAL 170 20 10)

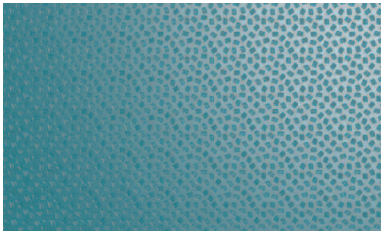


Van Dyke Brown (RAL 8014)

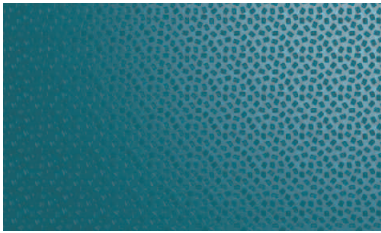
Classics



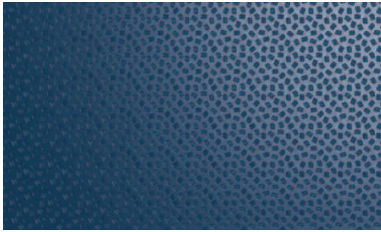
Solent Blue (RAL 240 40 40)



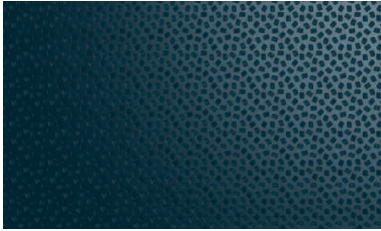
Wedgewood Blue (RAL 220 50 15)



Ocean Blue (RAL 220 30 25)

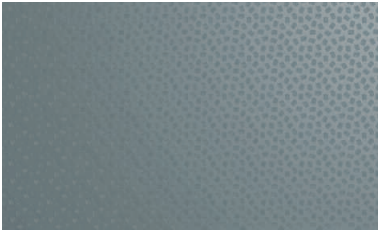


Sargasso (RAL 5003)



Raven (RAL 7021)

Matts



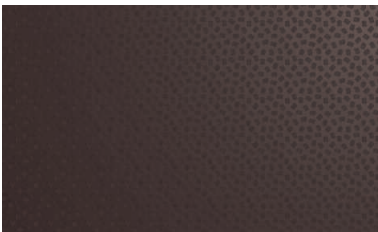
Alaska Grey (RAL 7000)



Anthracite (RAL 7016)



Green Grey (RAL 150 40 10)



Oxidised (RAL 050 20 10)



Terracotta (RAL 040 40 40)

Colour reassurance

Colour availability

All the colours on the colour card are now available on short production lead times, and from our Colorcoat® Accredited Distributors in standard sizes. To check the quickest colour availability for your project contact the Colorcoat Connection® helpline on +44 (0) 1244 892434.

Repertoire®

As an additional service, whether you want your building to stand out, or blend with the surroundings, we can create a unique identity for your building. Through our Repertoire® Colour Consultancy service we can match almost any solid colour for walls or roofs of your building, with a minimum order quantity of 5000m². Smaller order quantities may be possible dependant on size - please contact your Tata Steel representative for further information. We can work from either physical swatches or reference standards.

Metal hand samples



Metal hand samples are available for all colours. For a truer representation of colour and effect, please obtain metal hand samples from the Colorcoat Connection® helpline or online at www.colorcoat-online.com/samples

Colour consistency

If tonal consistency is critical, all cladding for a single elevation should come from the same production batch.

Matching components

If accessories made from other materials are to be colour-matched to the roof or wall cladding, the best reference is the actual profiles or panels delivered to site, or material from the same batch.

www.colorcoat-online.com

Trademarks of Tata Steel UK Limited

Albatross, Burano, Colorcoat, Colorcoat Connection, Colorcoat HPS200 Ultra, Colorcoat Prisma, Confidex, Galvalloy, Hamlet, Heritage Green, Honesty, Meadowland, Petra, Repertoire, Sargasso, Scintilla and Svelte Grey are trademarks of Tata Steel UK Limited.

Whilst the Colorcoat Connection® helpline takes care in giving out information or advice, it does so only on the basis of the facts supplied. Tata Steel Europe Limited and its subsidiaries do not accept any liability for providing inaccurate, misleading or incomplete information or advice or any reliance which may be placed on such information or advice. The recipient should satisfy itself of the accuracy and appropriateness of any information or advice before relying on it.

While care has been taken to ensure that the information contained in this publication is accurate, neither Tata Steel, nor its subsidiaries, accept responsibility or liability for errors or for information which is found to be misleading. Suggestions for, or descriptions of, the end use or application of products or methods of working are for information only and Tata Steel Europe Limited and its subsidiaries accept no liability in respect thereof.

Before using products or services supplied or manufactured by Tata Steel and its subsidiaries, customers should satisfy themselves as to their suitability.



Scan for the latest version of this literature.

Sales Contact Details

Tata Steel

Shotton Works, Deeside
Flintshire CH5 2NH
United Kingdom
T: +44 (0) 1244 812345

Colorcoat Connection® helpline

T: +44 (0) 1244 892434
E: colorcoat.connection@tatasteel.com

Copyright 2022 Tata Steel UK Limited.
Registered Office: 18 Grosvenor Place, London, SW1X 7HS.
Registered in England No. 2280000

Language English UK 0922